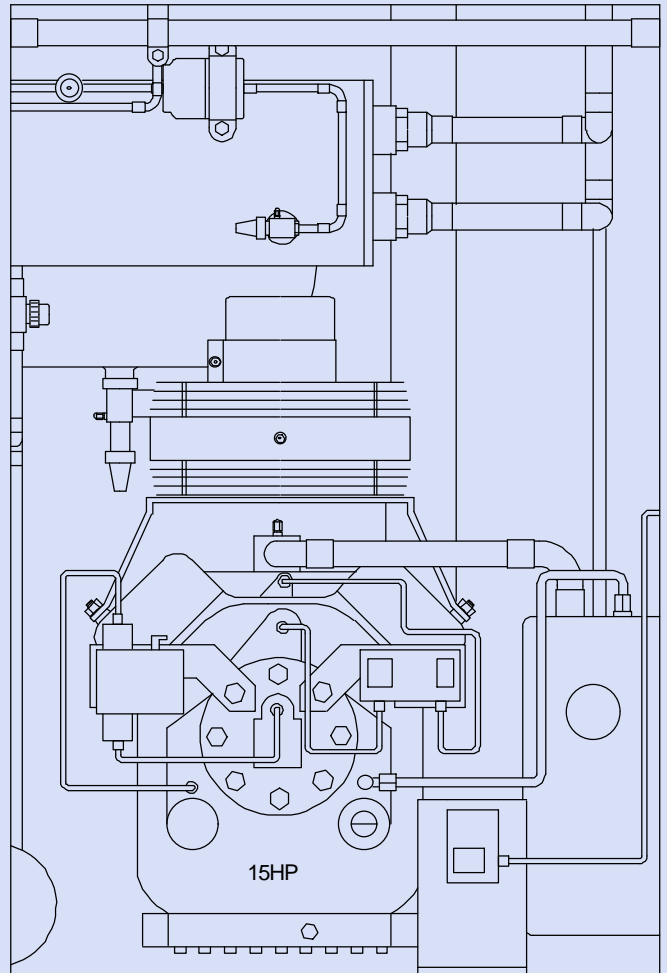
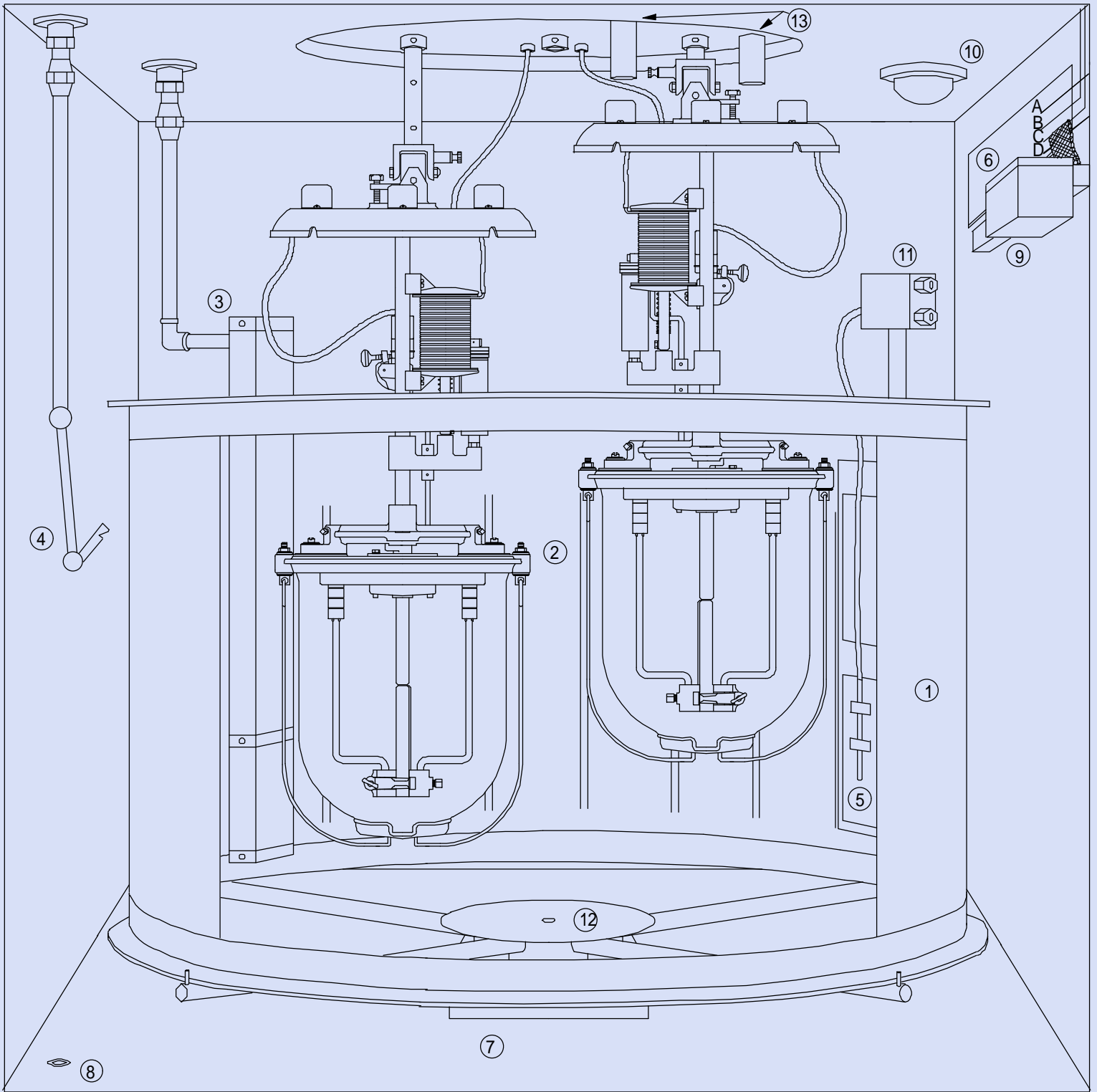


R-502 COMPRESSOR

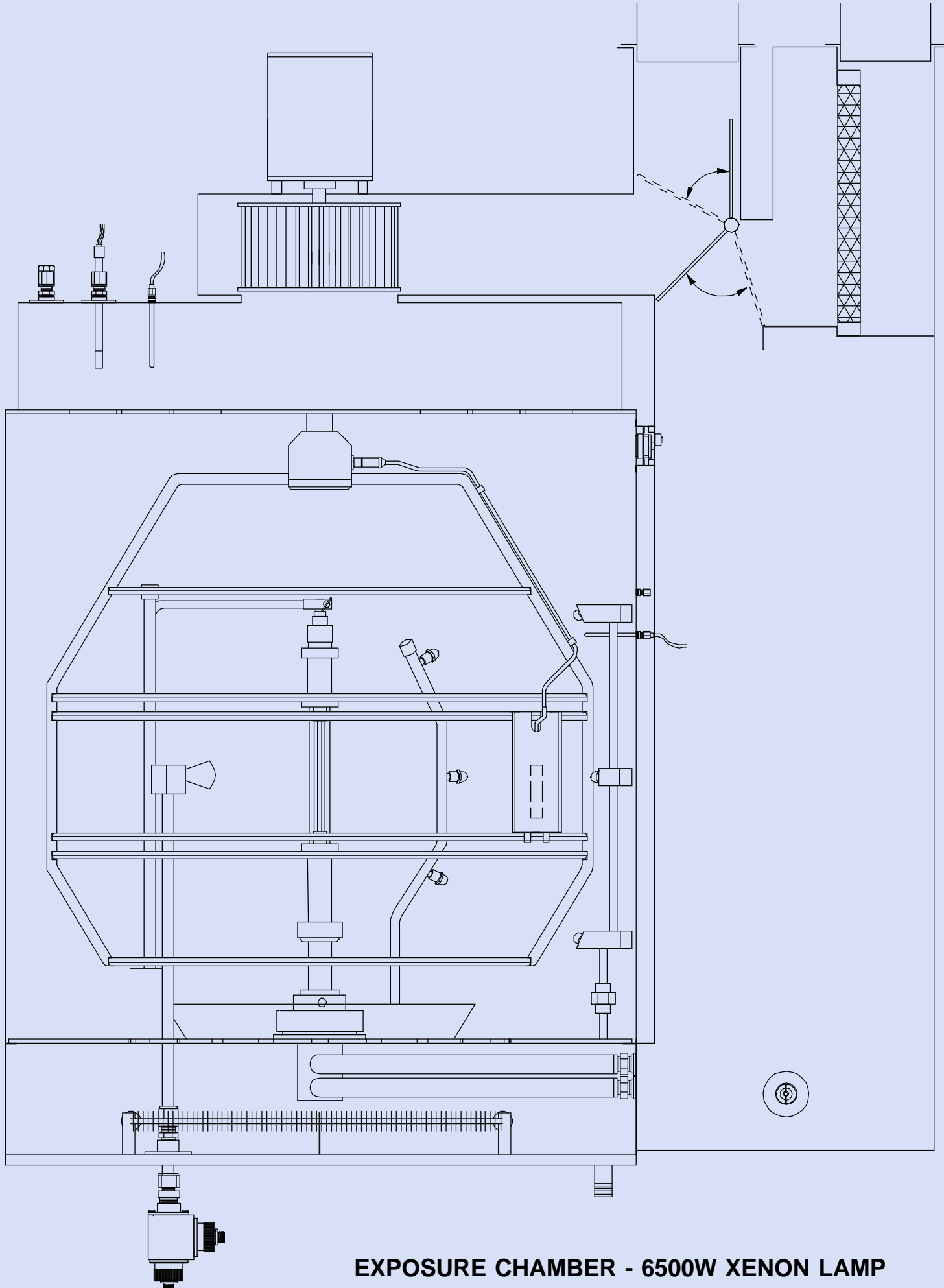


R-13 COMPRESSOR

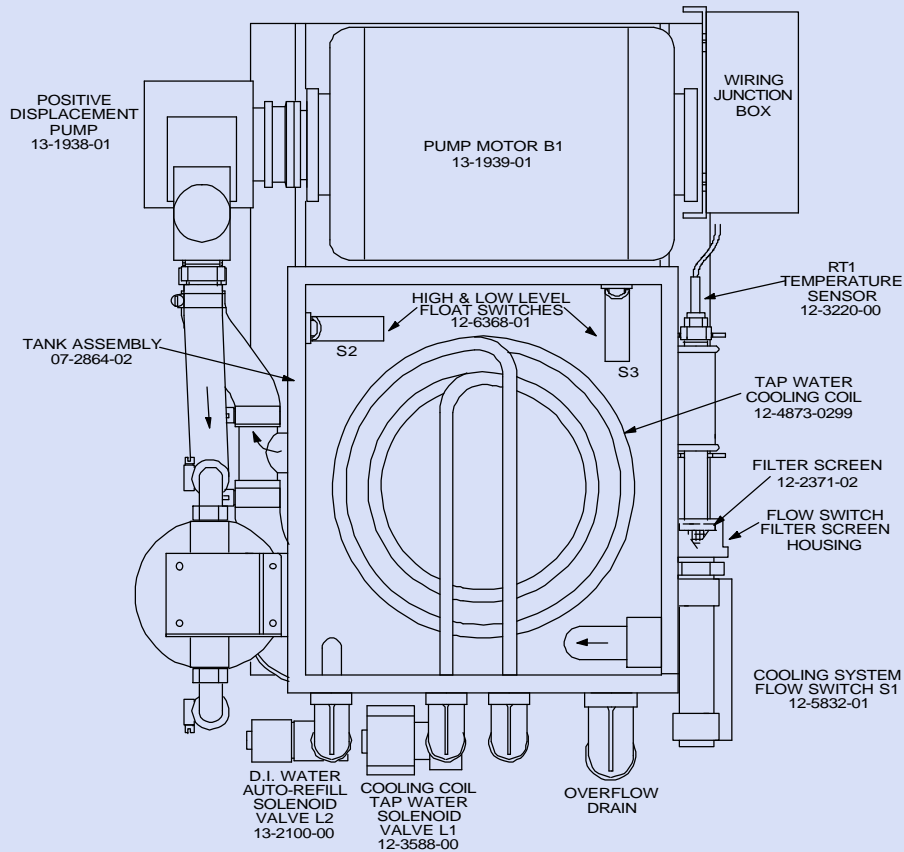
**DUAL-STAGE REFRIGERATION SYSTEM**



**EXPOSURE CHAMBER - DUAL ENCLOSED CARBON ARC LAMPS**



**EXPOSURE CHAMBER - 6500W XENON LAMP**



### CS-6 Water Over Temperature Controller

This controller is used to set the reservoir operating temperature and the overtemperature limit. The operating temperature setting, 55°C, controls tap water flow through the cooling coil (by turning a solenoid valve off and on). The over temperature setting, 65°C, prevents lamp system overheating by triggering an instrument shut down if this temperature is reached. If an overtemperature alarm occurs, you must correct the cause and then reset this controller to resume normal operation. Setting and reset instructions are shown below.

- AL1 = Over Temp. Cutout (65°C Factory Setting)
- AL2 = Operating Setpoint (55°C Factory Setting)

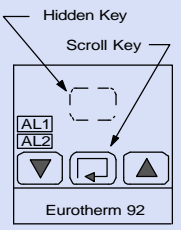
Note: Alarm 2 (AL2) is normally on until cooling water reaches operating temperature. At that point the tap water solenoid activates to initiate cooling. This is normal. Only Alarm 1 (AL1) can cause instrument shutdown.

To View Setpoints: Press Scroll once and units are displayed. Press Scroll again and then an Arrow key to view the AL1 setpoint. Press Scroll again and an Arrow key to view AL2.

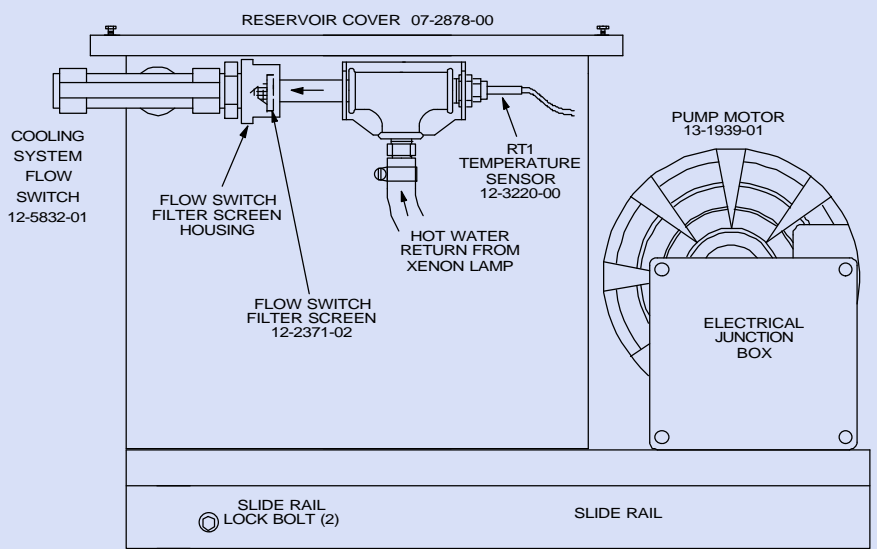
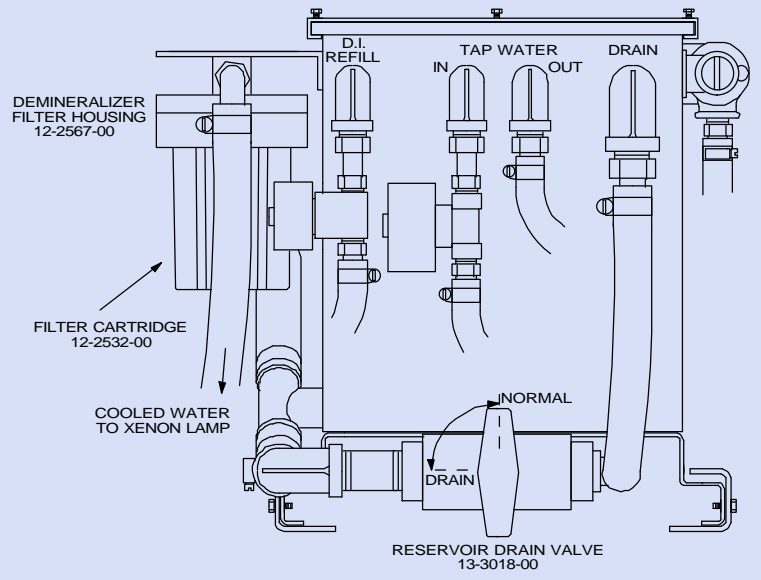
The display will return to the initial mode in 5 seconds if no keys are pressed.

To Reset an Alarm: The AL1 indicator will be flashing. Press the Reset key beside the controller. The over temperature cutout alarm is latching and must be reset for the controller to resume normal operation. Reset it only after the fault has been corrected.

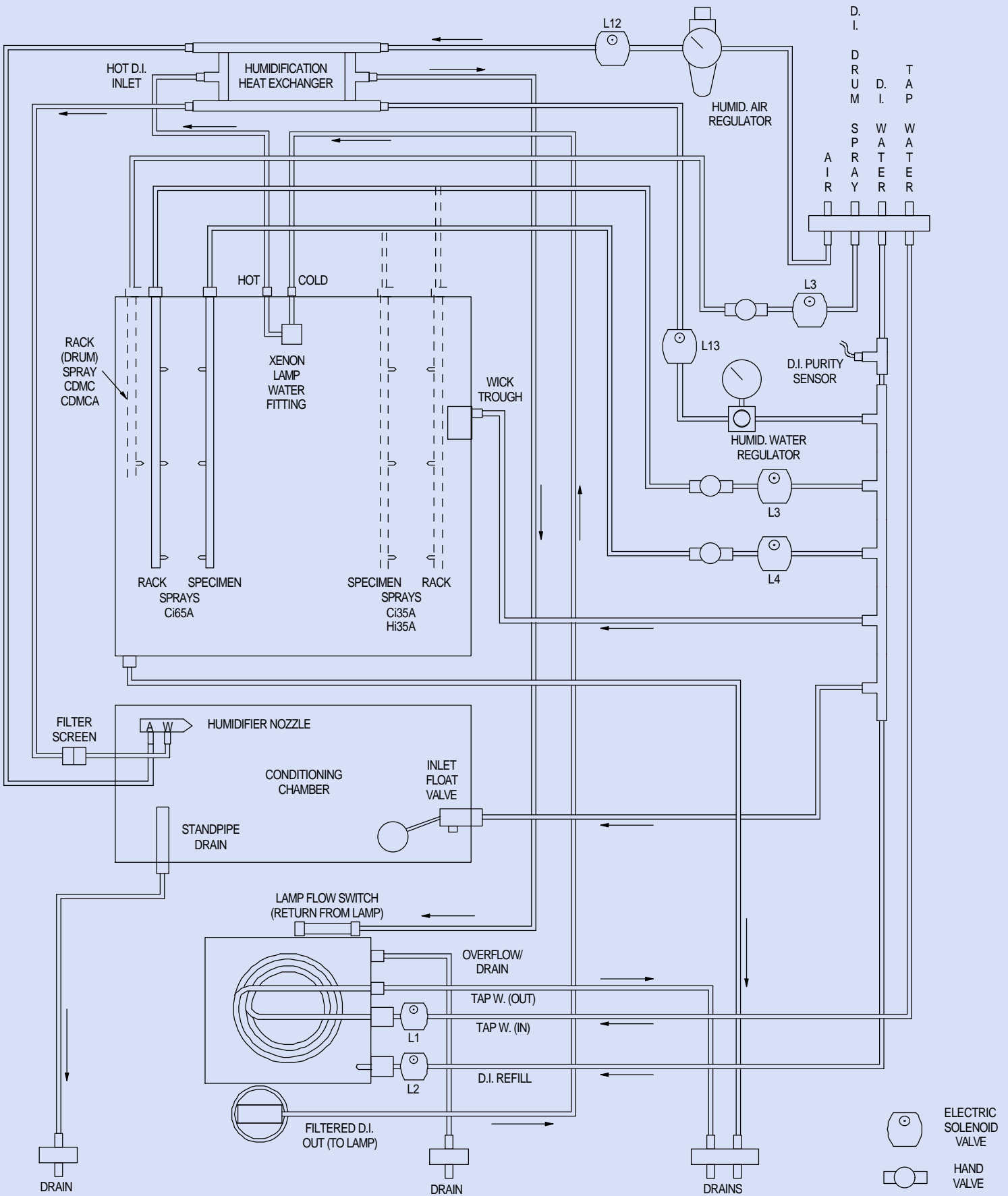
To Change Setpoints (AL1 or AL2): Press Scroll until °C appears in the display. Press the hidden key (see above right). Press the Scroll key to select AL1 or AL2. Press an arrow key to view the setpoint. Press the arrow keys to change the setpoint. Press the hidden key to save the new setting or press Scroll to select the other setpoint for alteration. Press the hidden key to save both new settings. CAUTION: DO NOT set AL1 above 65°.



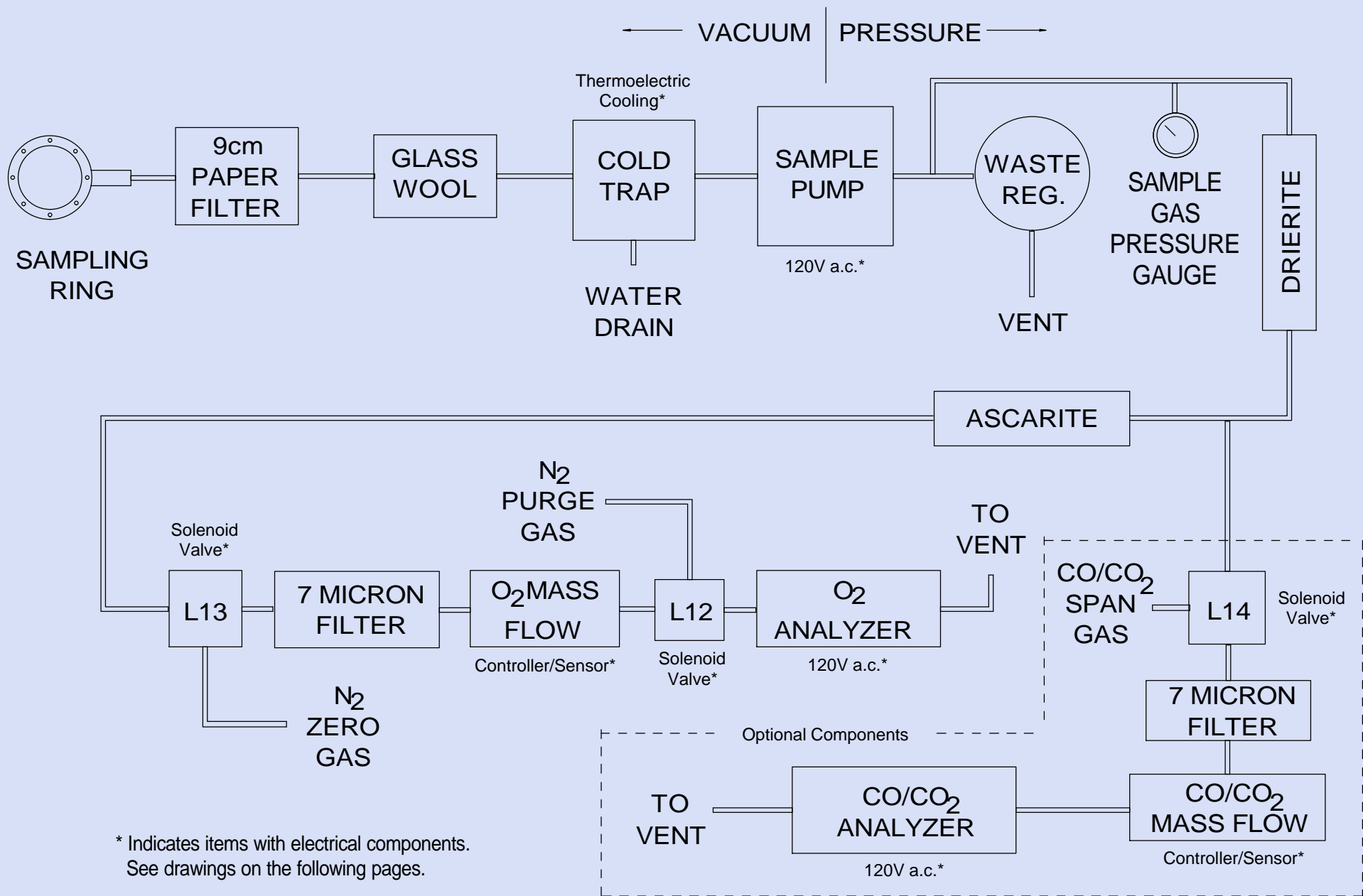
This controller is located on the upper control panel of the instrument. In some cases it is behind a hinged door panel.



## CS6 XENON LAMP WATER COOLING AND FILTRATION SYSTEM

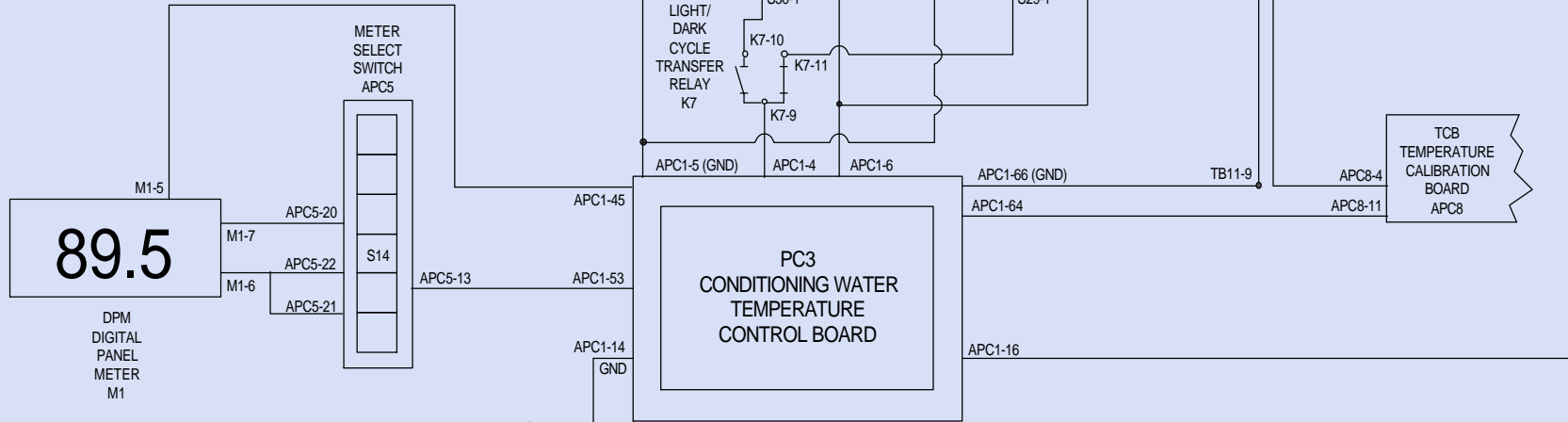


**HYDRAULIC DIAGRAM - Ci65 WEATHER-OMETER**

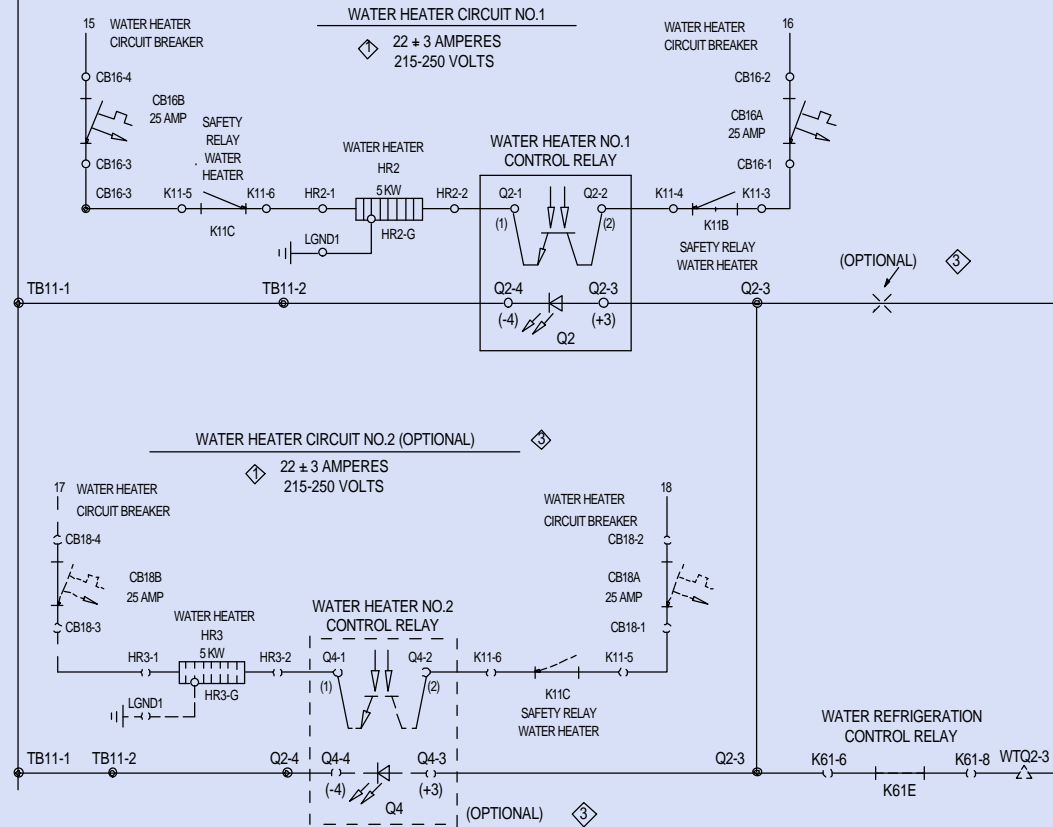
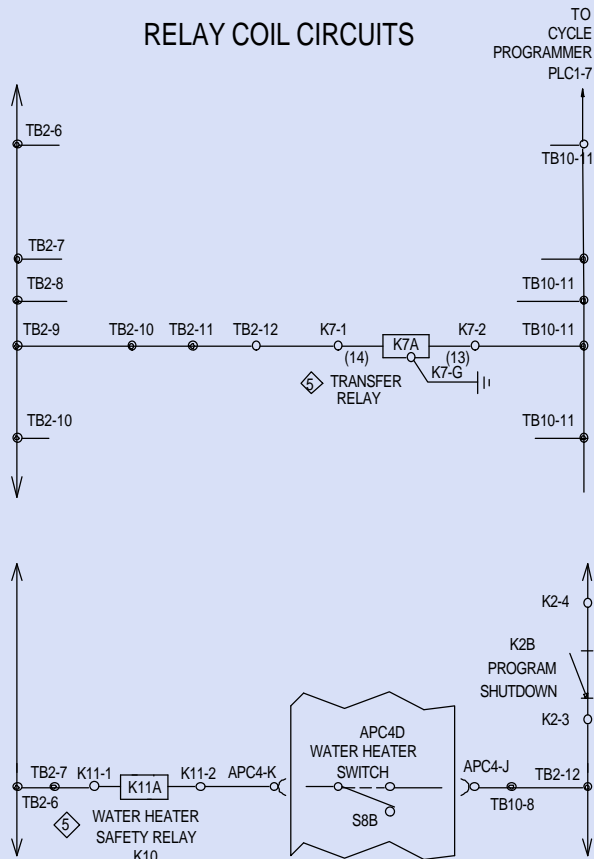


**CONE CALORIMETER GAS SAMPLING CIRCUIT**

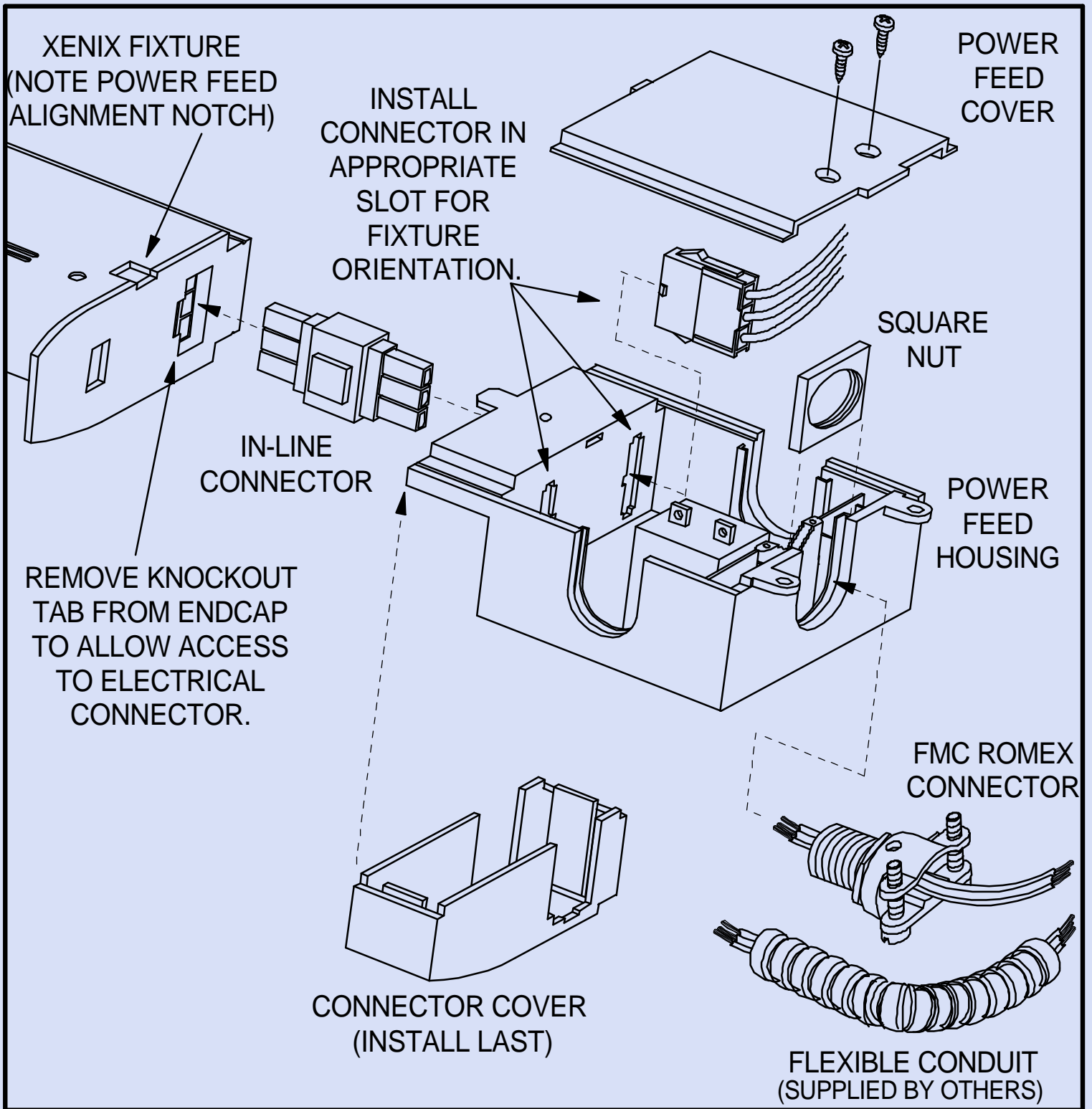
# CM 487



## RELAY COIL CIRCUITS

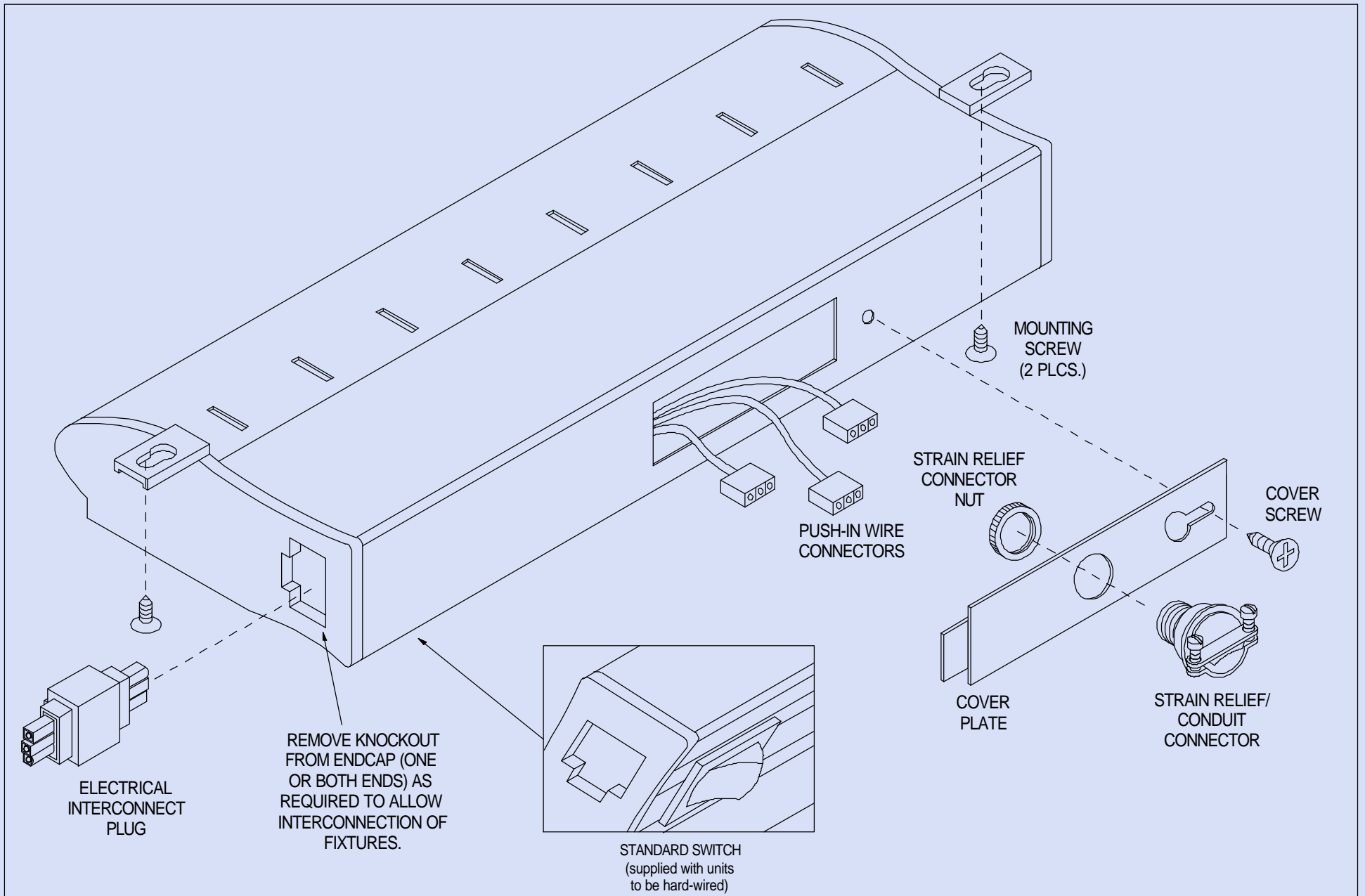


## TEMPERATURE CONTROL CIRCUIT - CM 487

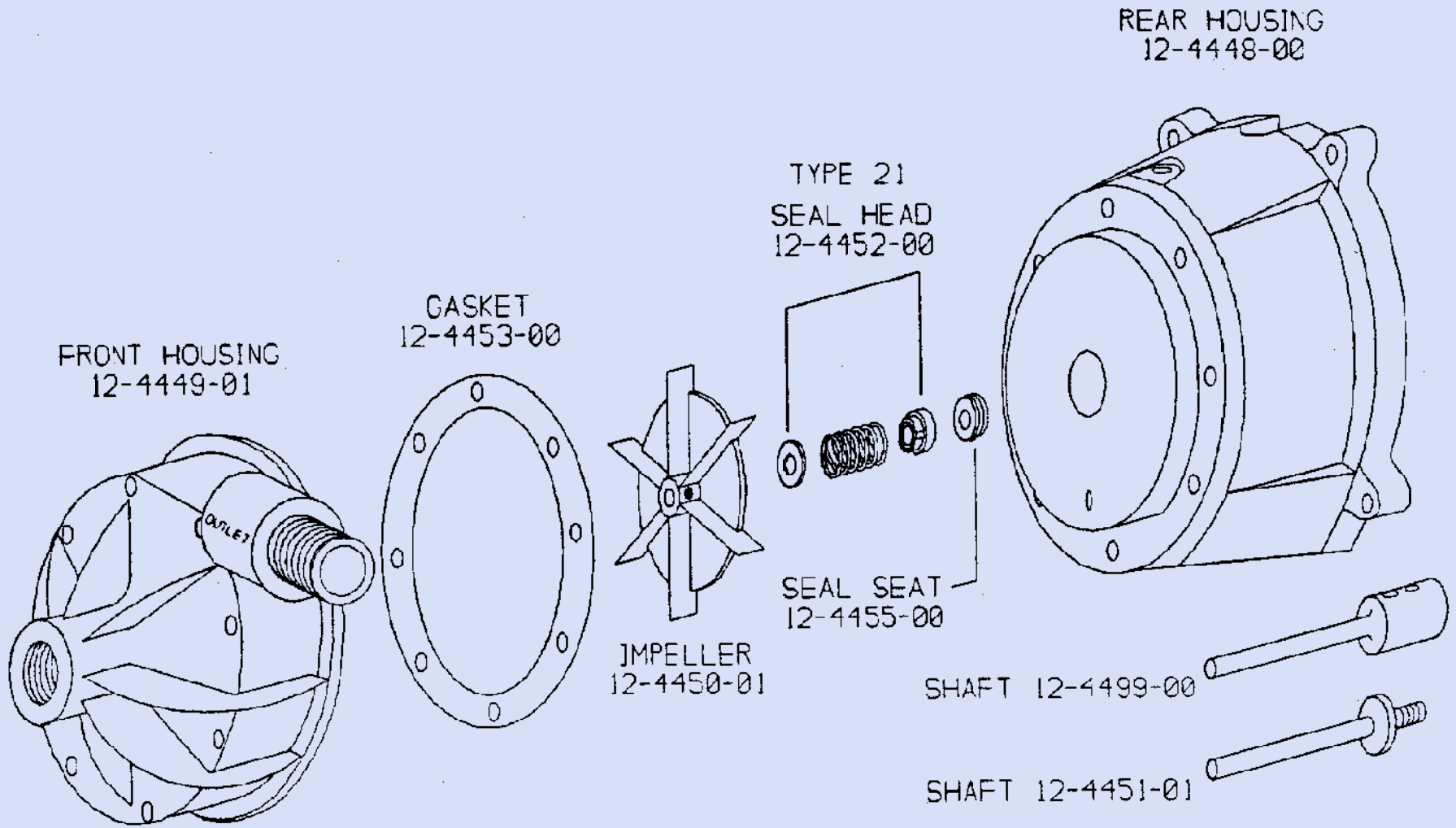


**POWER FEED TO XENIX XENON LAMP FIXTURE**

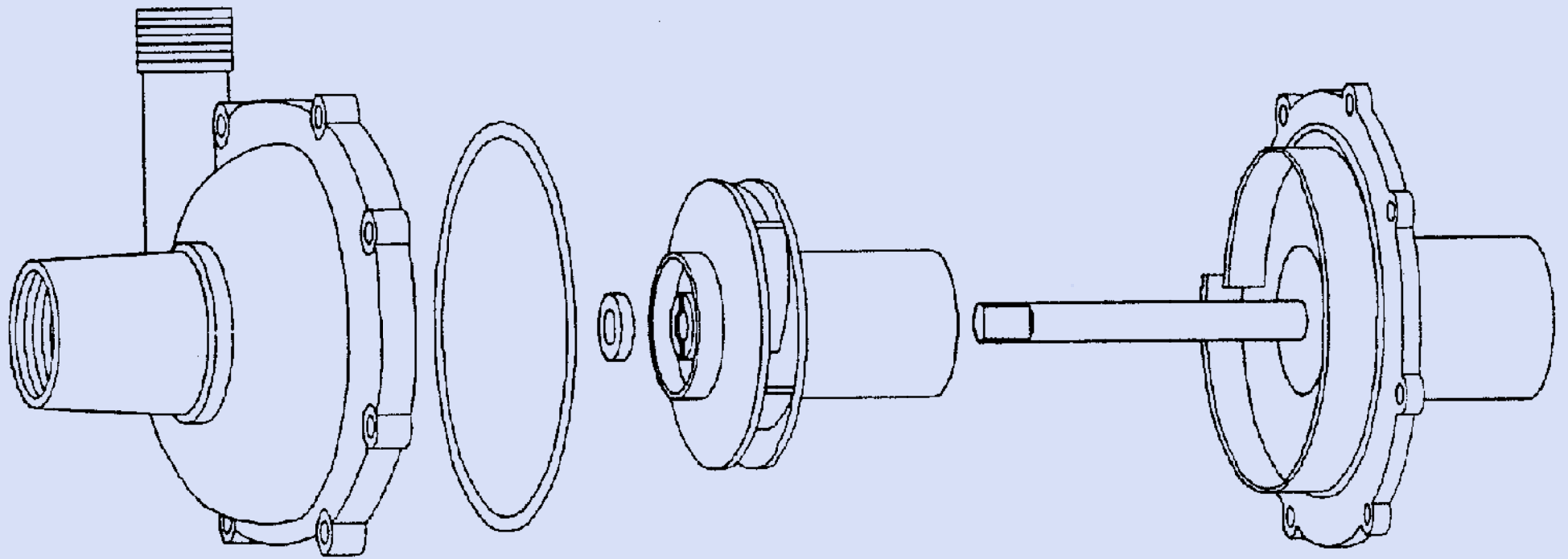




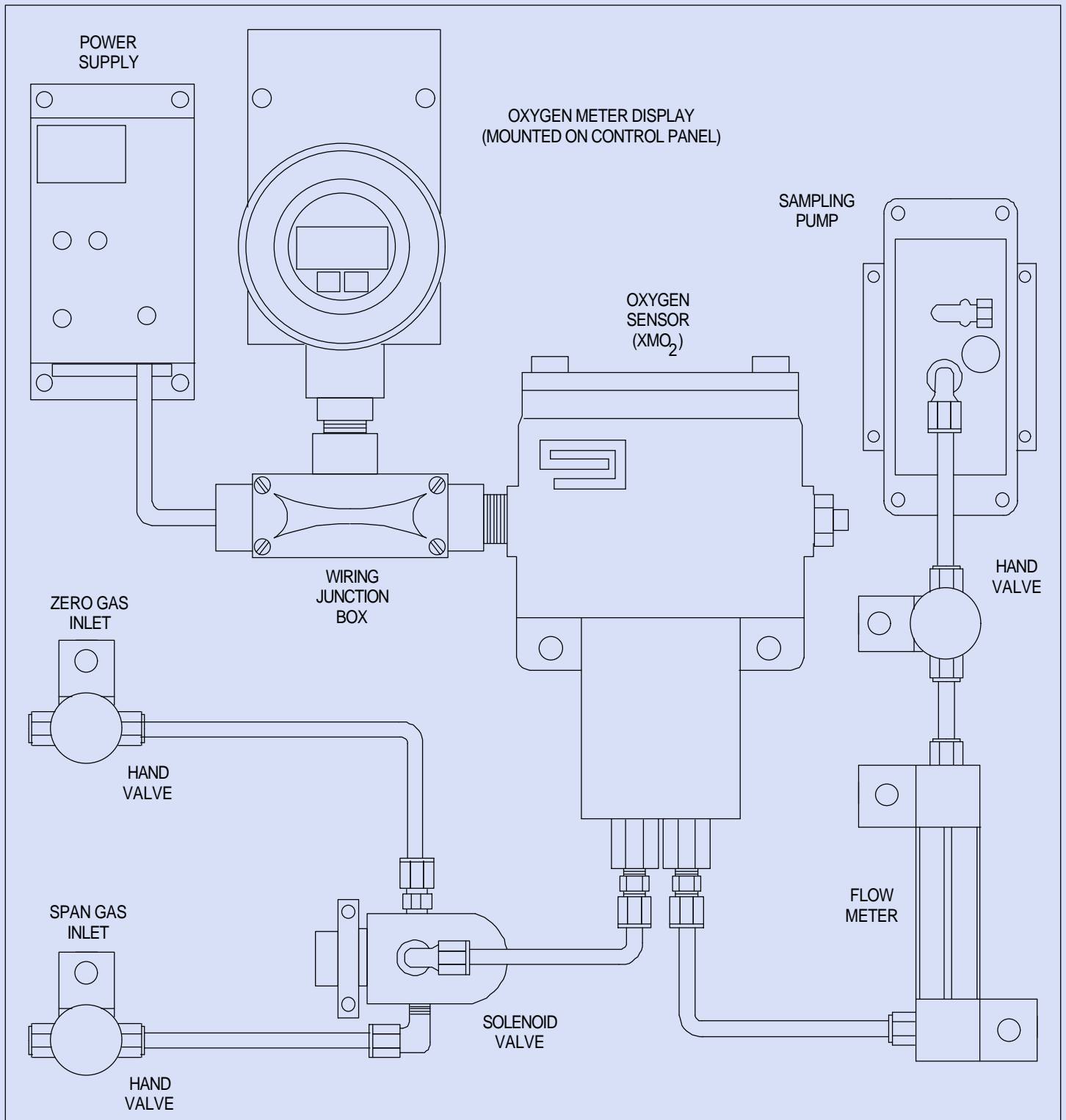
## HALOGEN 120 LAMP FIXTURE



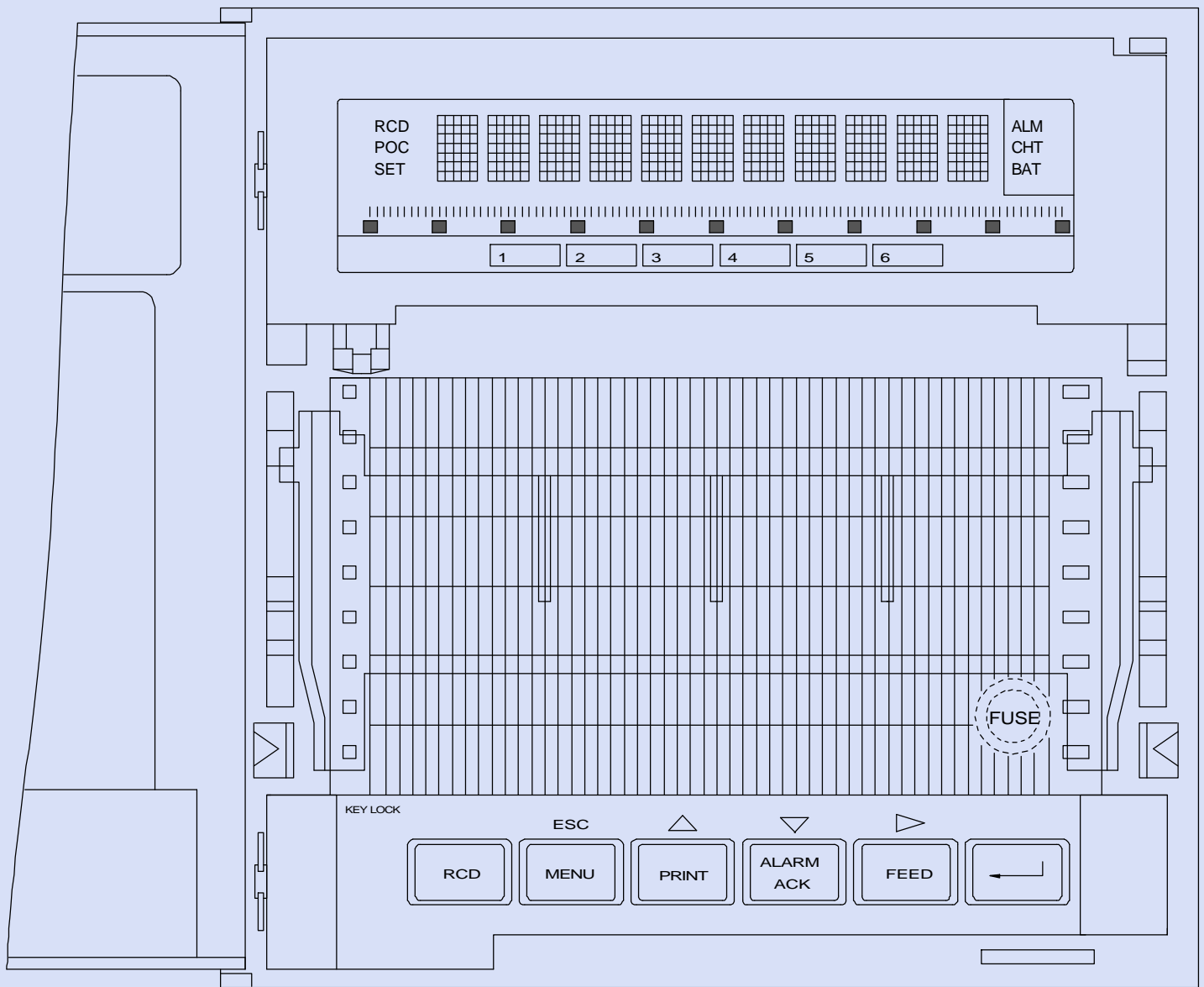
**WATER PUMP DETAILS - EASTERN PUMP**



**WATER PUMP DETAILS - MARCH PUMP**



**OXYGEN MEASUREMENT SYSTEM - VITIATED COMBUSTION SYSTEM**



## YOKOGAWA CR1000 CHART RECORDER